

Important: New colours for mains electricity cables

The colours of the live and neutral wires in electrical cables are changing from red and black to brown and blue. This is the same as the wires in flexible leads to portable appliances.

You can continue to use cables in the old colours of red and black until 31 March 2006. After that, all new wiring must be in the new colours.

Old colours



New colours



Authorised competent person self-certification schemes for installers who can do all electrical installation work

Authorised competent person self-certification schemes for installers who can do electrical work only if it is necessary when they are carrying out other work



BRE Certification Ltd

Phone: 0870 609 6093
Website: www.partp.co.uk



British Standards Institution

Phone: 01442 230442
Website: www.bsi-global.com/kitemark



ELECSA Limited

Phone: 0870 749 0080
Website: www.elecsa.org.uk



NAPIT Certification Limited

Phone: 0870 444 1392
Website: www.napit.org.uk



NICEIC Certification Services Ltd

Phone: 0800 013 0900
Website: www.niceic.org.uk



CORGI Services Limited

Phone: 01256 372200
Website: <http://www.corgi-gas-safety.com>



ELECSA Limited

Phone: 0870 749 0080
Website: www.elecsa.org.uk



NAPIT Certification Limited

Phone: 0870 444 1392
Website: www.napit.org.uk



NICEIC Certification Services Ltd

Phone: 0800 013 0900
Website: www.niceic.org.uk



OFTEC (Oil Firing Technical Association for the Petroleum Industry Limited)

Phone: 0845 658 5080
Website: www.oftec.co.uk

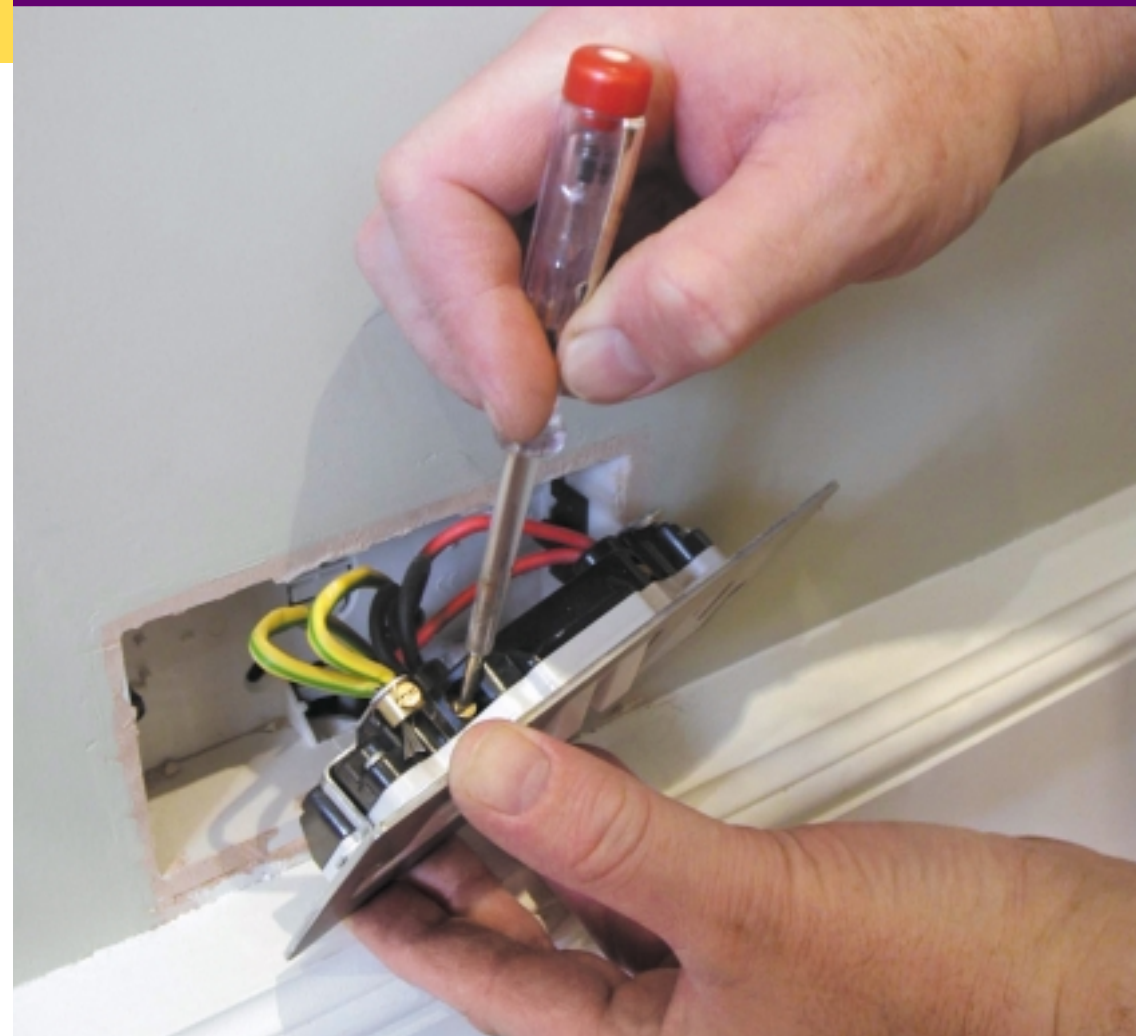


Office of the
Deputy Prime Minister

Creating sustainable communities

New rules for electrical safety in the home

Read this before starting any electrical work



Published by the Office of the Deputy Prime Minister. ©Crown copyright 2004. Printed in the UK, December 2004 on material containing 75% post-consumer waste and 25% ECF pulp. Product code: 04BR02710

For further information visit our website: www.odpm.gov.uk/electricalsafety

How to meet the new rules

When do the new rules start?

- From 1 January 2005, people carrying out electrical work in homes and gardens in England and Wales will have to follow the new rules in the Building Regulations.

Why have you introduced the new rules?

- To reduce the number of deaths, injuries and fires caused by faulty electrical installations.
- To make it harder for 'cowboy builders' to leave electrical installations in an unsafe condition.

What should I do if I want to do some electrical work?

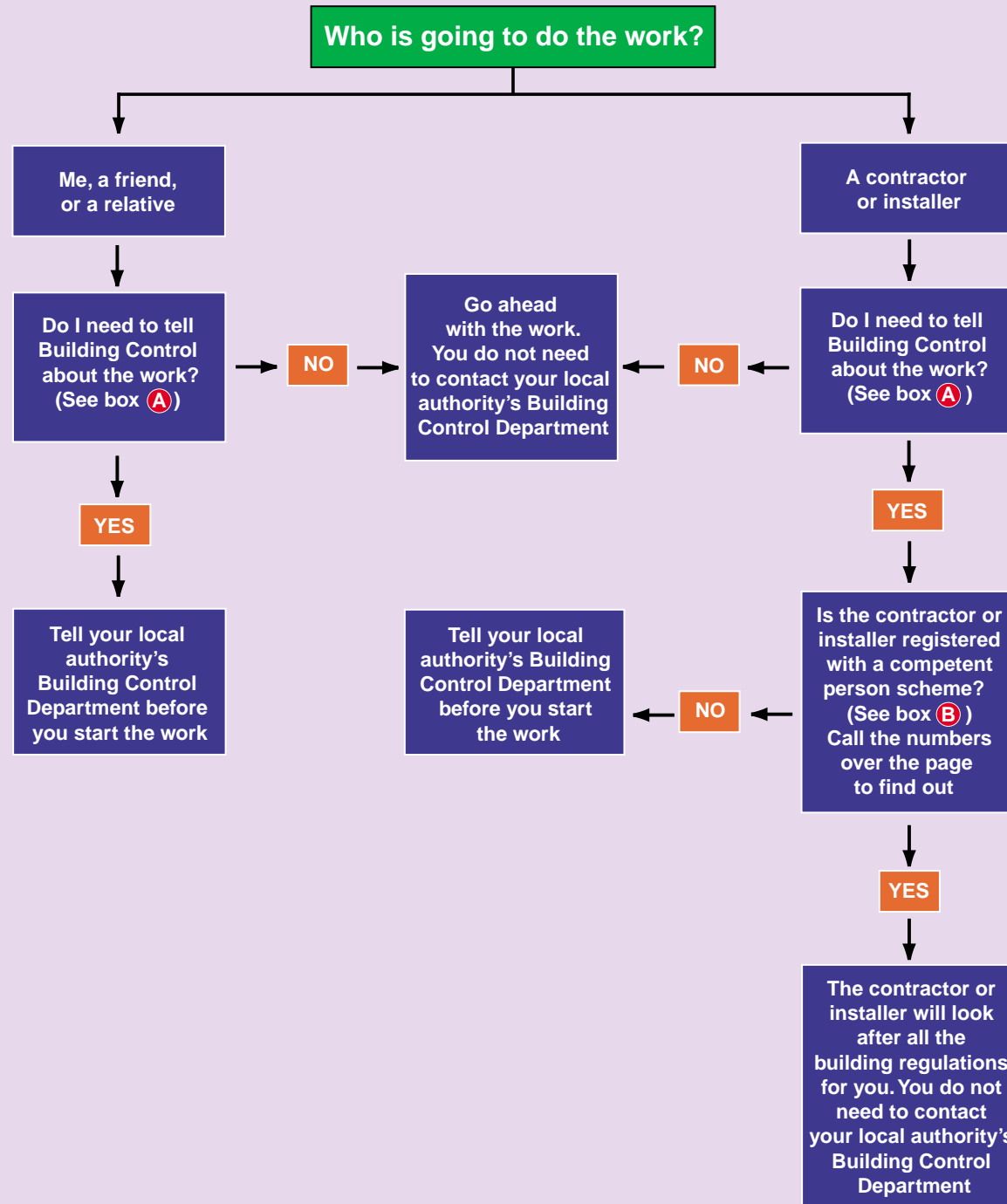
- See the flow chart to check if you need to tell your local authority's Building Control Department before you start the work.

What will happen if I do not follow the Building Regulations?

- The electrical installation might not be safe.
- You will have no record of the work done.
- You may have difficulty selling your home if you do not have the right electrical safety certificates.
- Your local authority's Building Control Department may insist that you put right faulty work.

Where can I get more information?

- From your local authority's Building Control Department.
- We publish a free 'Explanatory Booklet on the Building Regulations'. Phone **0870 1226 236** or visit www.odpm.gov.uk/explanatory-booklet for a copy.
- 'Approved Document P' explains how to meet the new rules. You can download this free of charge from www.odpm.gov.uk/approved-documents. Or you can buy a printed copy for £15 from The Stationery Office. (To order, phone **0870 600 5522** or visit www.tso.co.uk/bookshop.)



A You **do not** need to tell your local authority's Building Control Department about:

- repairs, replacements and maintenance work; or
- extra power points or lighting points or other alterations to existing circuits (except in a kitchen or bathroom, or outdoors).

You need to tell them about most other work.

If you are not sure about this, or you have any questions, ask your local authority's Building Control Department.

B Why should I use an installer who is registered with a competent person scheme?

- Members of schemes can deal with all the new rules for you.
- Members are qualified to carry out electrical work.
- Members will give you a certificate to confirm their work follows the new rules.
- You will not have to pay Building Control charges.
- You will have the option of taking out an insurance-backed guarantee for the work.
- You will have access to a formal complaints procedure if you are not happy with the work.

To contact one of the competent person schemes, phone one of the numbers given over the page.

Registered installers are in the process of becoming members of the new building trades Quality Schemes which will be launched in 2005. Quality Schemes members will offer consumers more protection than the minimum protection registered installers must offer.